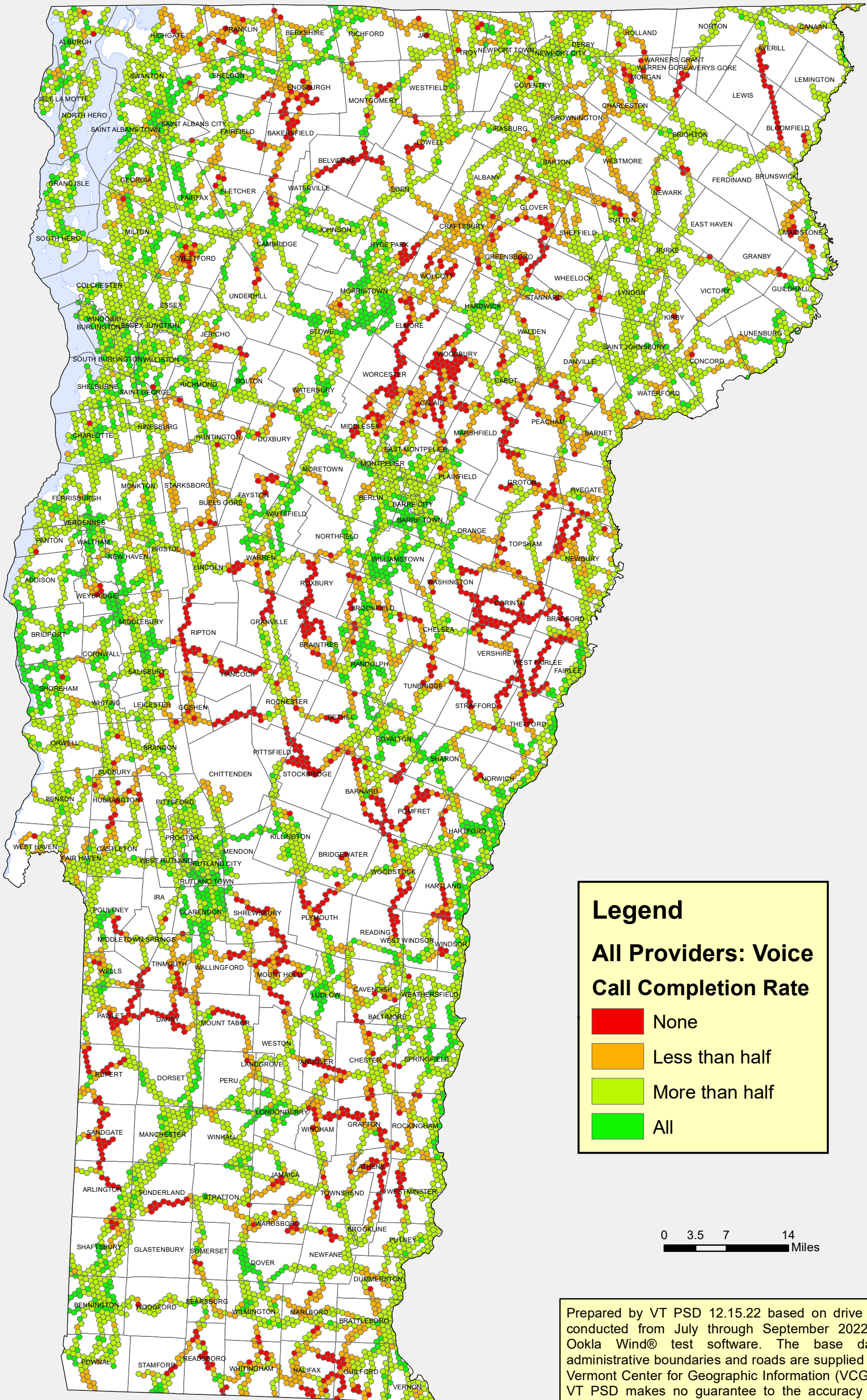


Mobile Wireless Voice Coverage - All Providers -



Legend

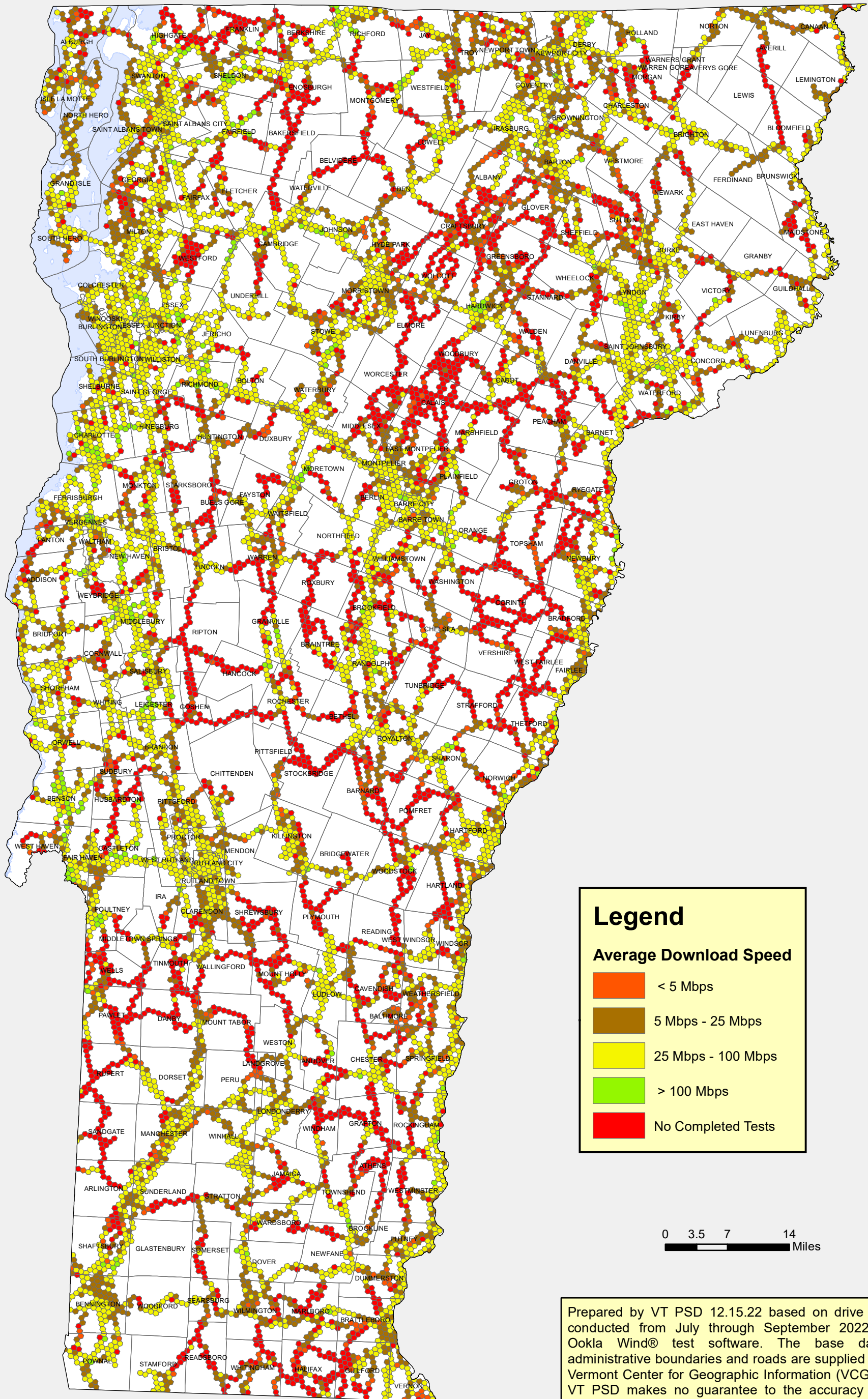
All Providers: Voice Call Completion Rate

- None
- Less than half
- More than half
- All

0 3.5 7 14 Miles

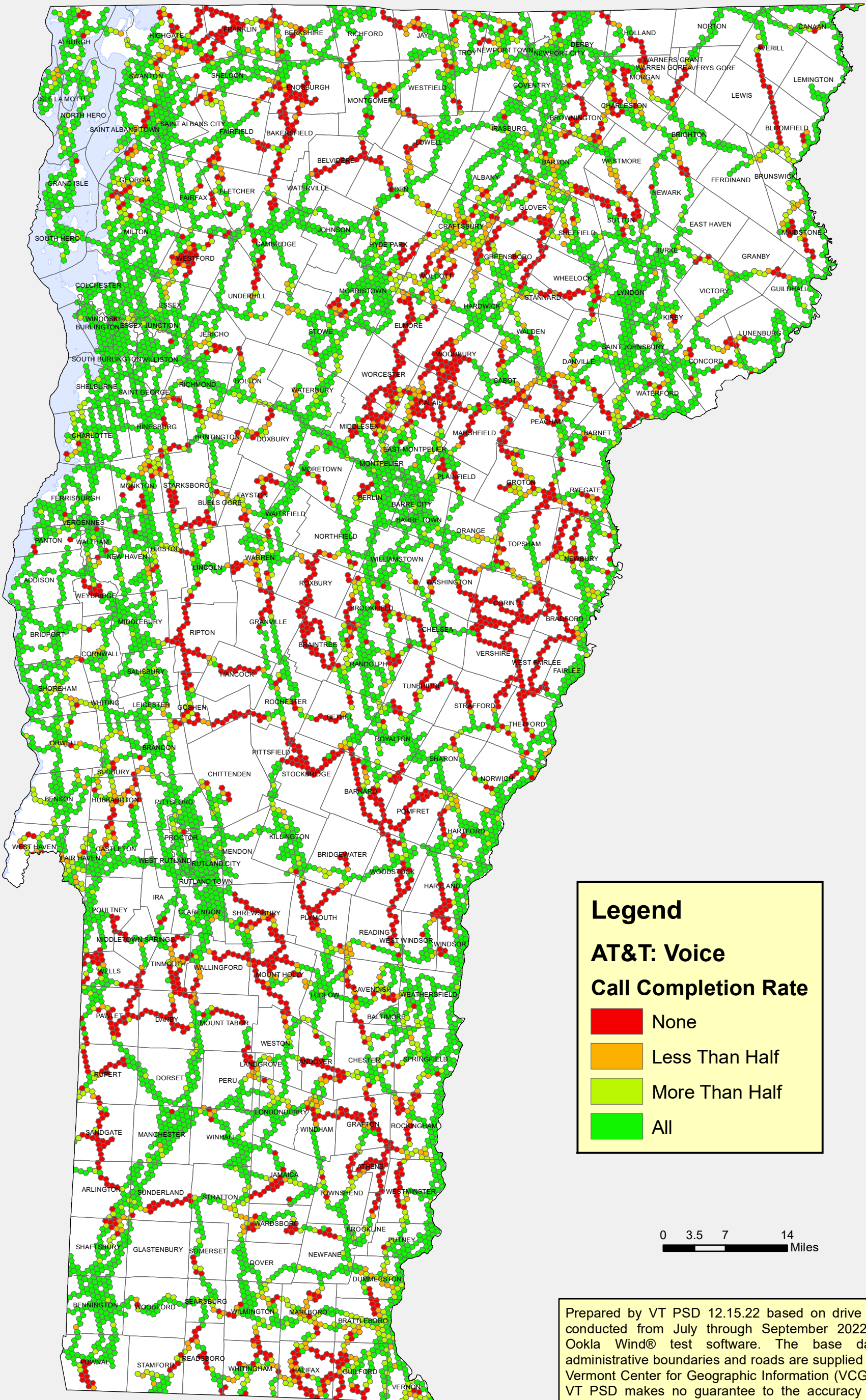
Prepared by VT PSD 12.15.22 based on drive testing conducted from July through September 2022 using Ookla Wind® test software. The base data of administrative boundaries and roads are supplied by the Vermont Center for Geographic Information (VCGI). The VT PSD makes no guarantee to the accuracy of this information.

Mobile Wireless Data Coverage - All Providers -



Prepared by VT PSD 12.15.22 based on drive testing conducted from July through September 2022 using Ookla Wind® test software. The base data of administrative boundaries and roads are supplied by the Vermont Center for Geographic Information (VCGI). The VT PSD makes no guarantee to the accuracy of this information.

Mobile Wireless Voice Coverage - AT&T -



Legend

AT&T: Voice

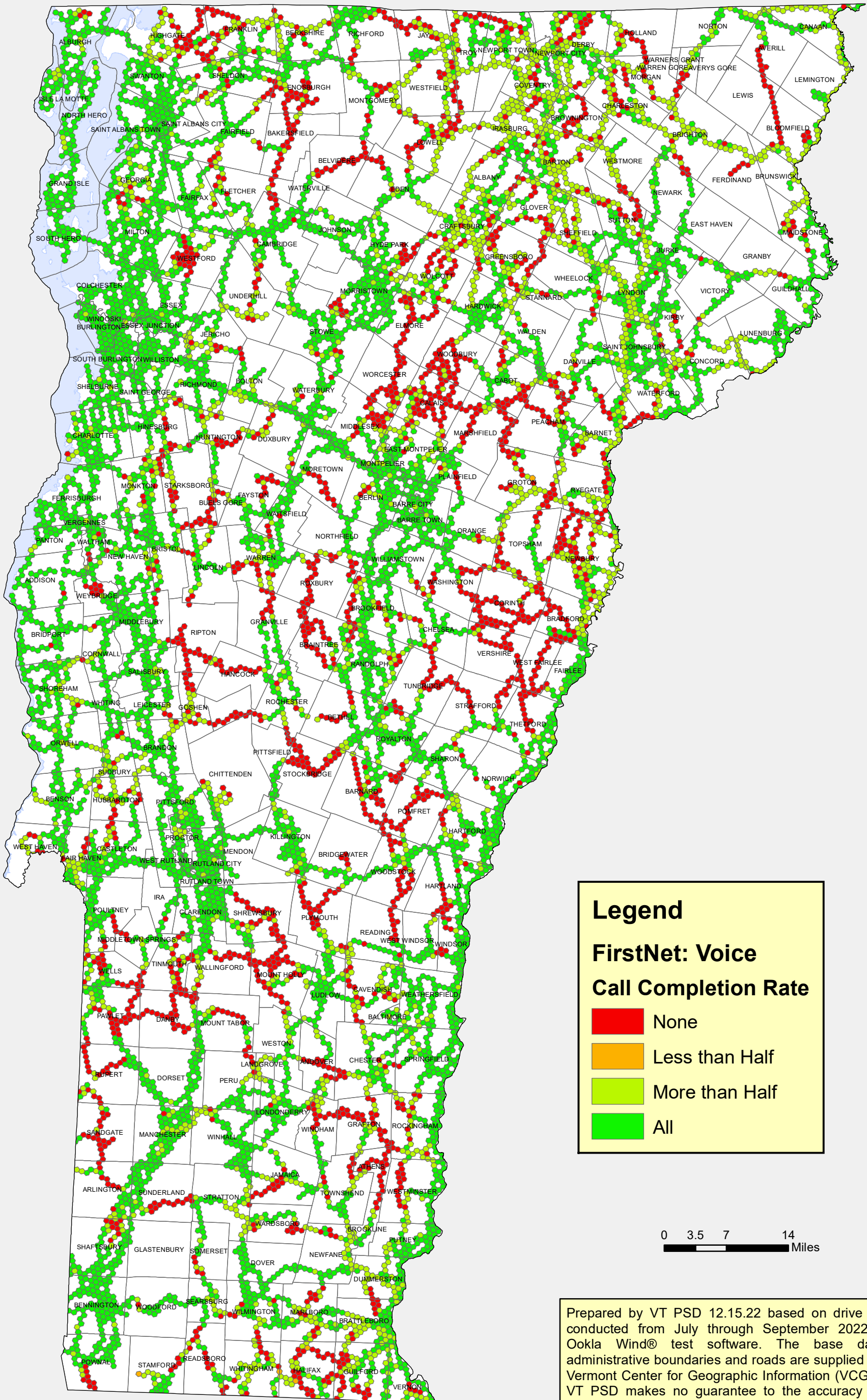
Call Completion Rate

- None
- Less Than Half
- More Than Half
- All



Prepared by VT PSD 12.15.22 based on drive testing conducted from July through September 2022 using Ookla Wind® test software. The base data of administrative boundaries and roads are supplied by the Vermont Center for Geographic Information (VCGI). The VT PSD makes no guarantee to the accuracy of this information.

Mobile Wireless Voice Coverage - FirstNet -



Legend

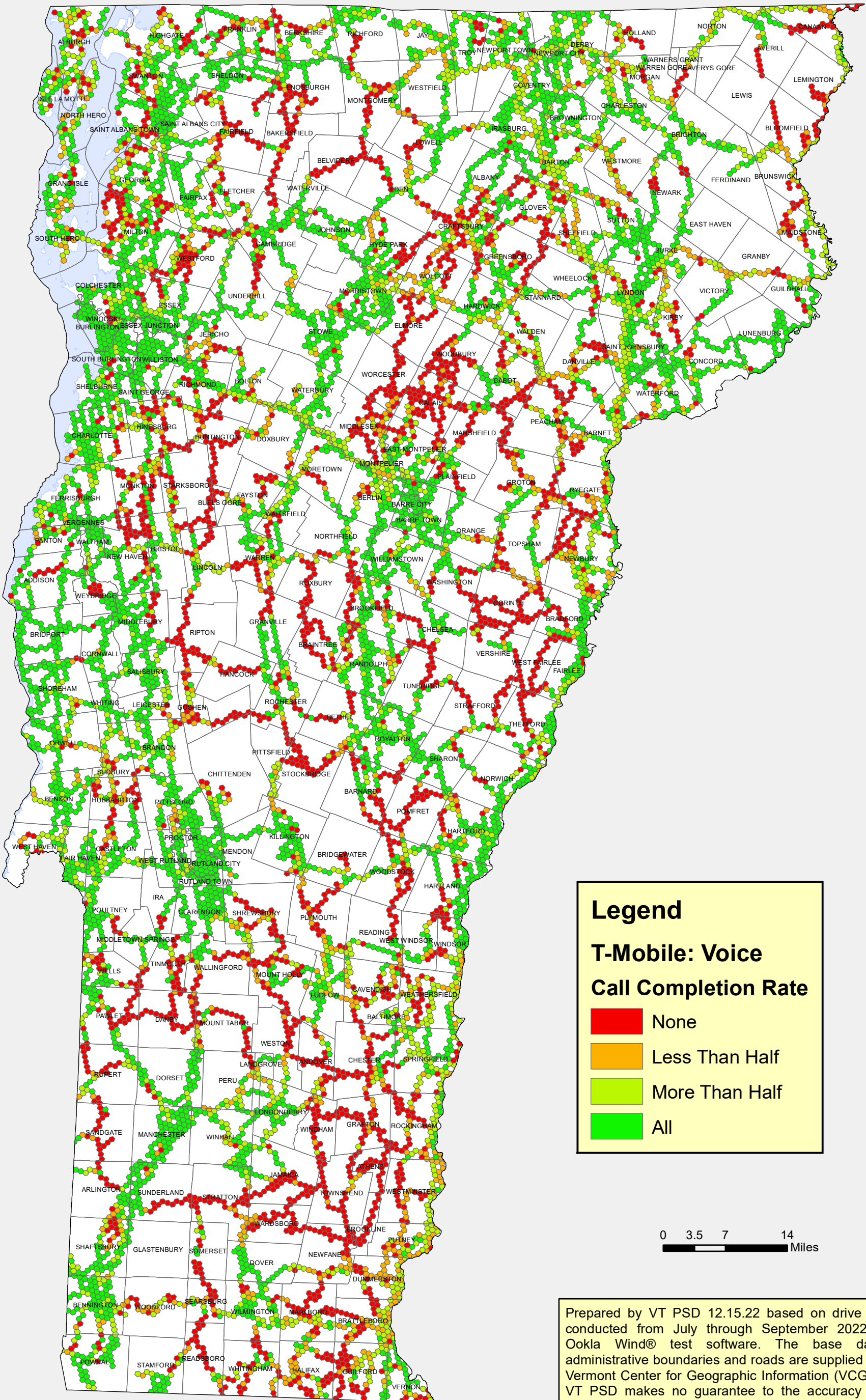
**FirstNet: Voice
Call Completion Rate**

- None
- Less than Half
- More than Half
- All

0 3.5 7 14
Miles

Prepared by VT PSD 12.15.22 based on drive testing conducted from July through September 2022 using Ookla Wind® test software. The base data of administrative boundaries and roads are supplied by the Vermont Center for Geographic Information (VCGI). The VT PSD makes no guarantee to the accuracy of this information.

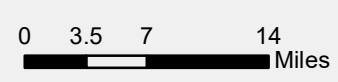
Mobile Wireless Voice Coverage - T-Mobile -



Legend

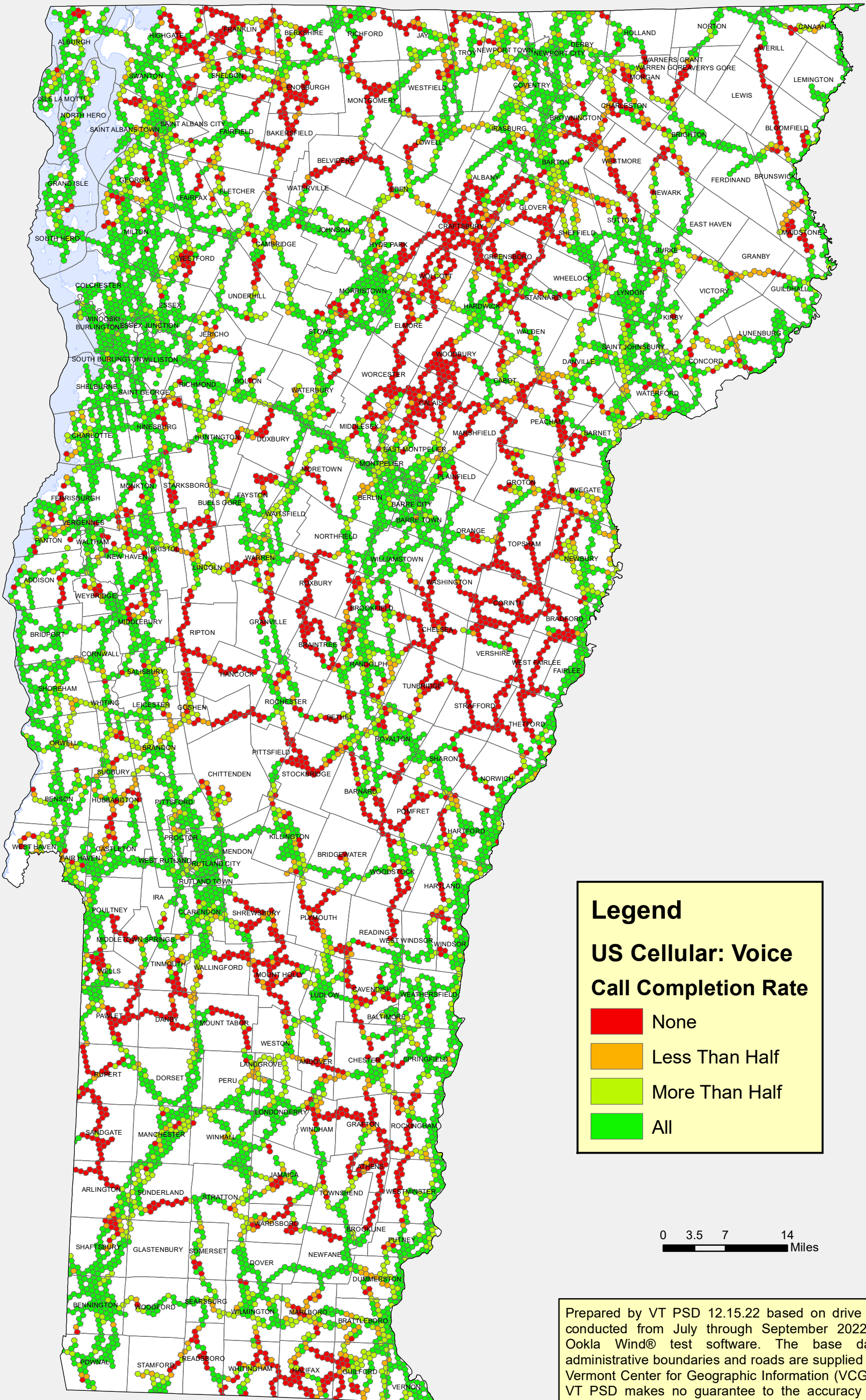
T-Mobile: Voice
Call Completion Rate

- None
- Less Than Half
- More Than Half
- All



Prepared by VT PSD 12.15.22 based on drive testing conducted from July through September 2022 using Ookla Wind® test software. The base data of administrative boundaries and roads are supplied by the Vermont Center for Geographic Information (VCGI). The VT PSD makes no guarantee to the accuracy of this information.

Mobile Wireless Voice Coverage - US Cellular -



Legend

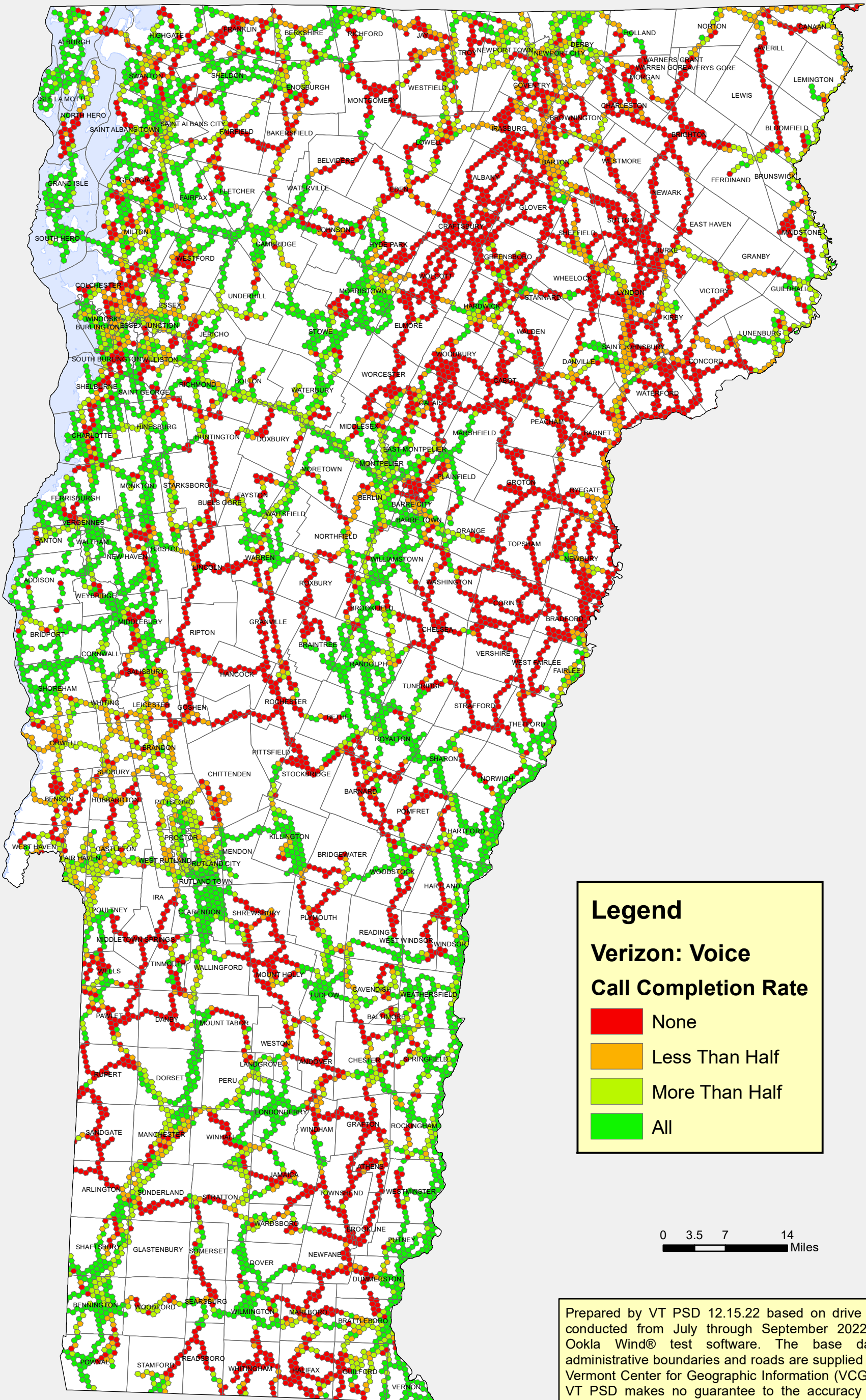
US Cellular: Voice Call Completion Rate

- None
- Less Than Half
- More Than Half
- All



Prepared by VT PSD 12.15.22 based on drive testing conducted from July through September 2022 using Ookla Wind® test software. The base data of administrative boundaries and roads are supplied by the Vermont Center for Geographic Information (VCGI). The VT PSD makes no guarantee to the accuracy of this information.

Mobile Wireless Voice Coverage - Verizon -



Legend

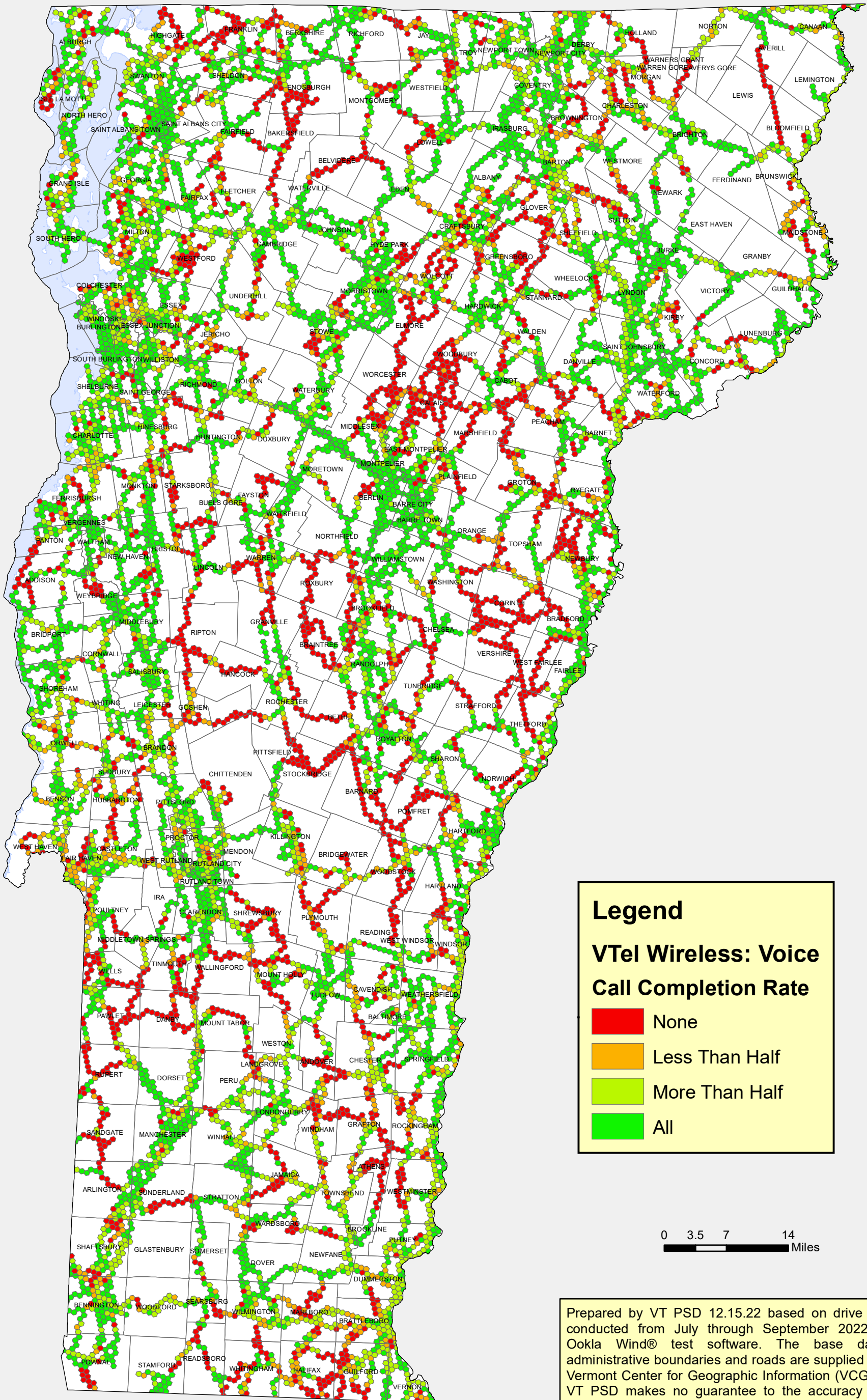
Verizon: Voice
Call Completion Rate

- None
- Less Than Half
- More Than Half
- All



Prepared by VT PSD 12.15.22 based on drive testing conducted from July through September 2022 using Ookla Wind® test software. The base data of administrative boundaries and roads are supplied by the Vermont Center for Geographic Information (VCGI). The VT PSD makes no guarantee to the accuracy of this information.

Mobile Wireless Voice Coverage - VTel Wireless -



Legend

VTel Wireless: Voice Call Completion Rate

- None
- Less Than Half
- More Than Half
- All

0 3.5 7 14 Miles

Prepared by VT PSD 12.15.22 based on drive testing conducted from July through September 2022 using Ookla Wind® test software. The base data of administrative boundaries and roads are supplied by the Vermont Center for Geographic Information (VCGI). The VT PSD makes no guarantee to the accuracy of this information.